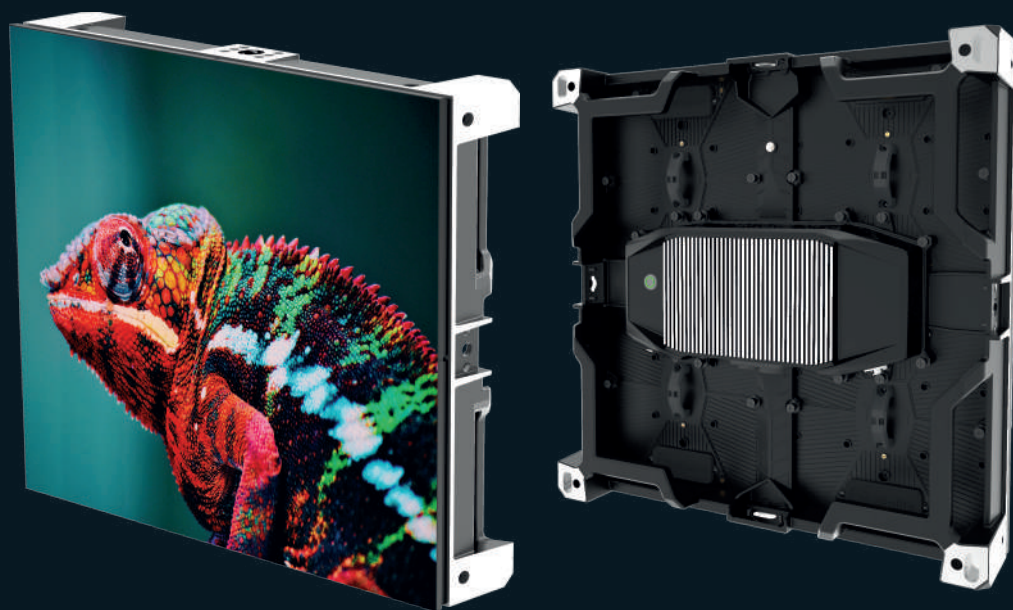




alfalite®

LED DISPLAYS

Modularpix® Series

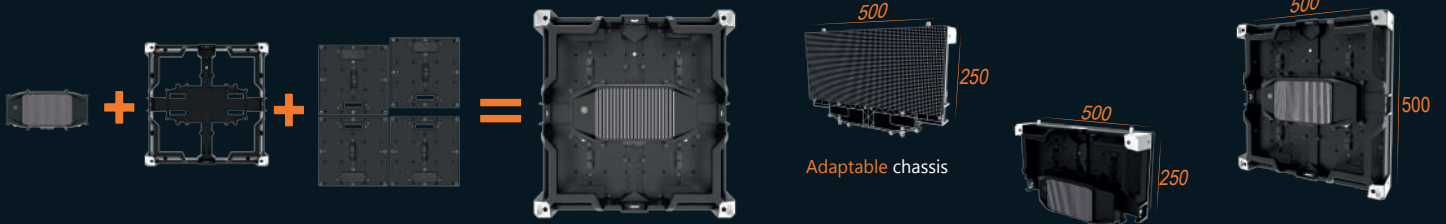


LED PANEL FOR CHALLENGING FIXED INSTALLATIONS.
ENTERTAINMENT, BROADCAST, CORPORATE AND RETAIL.

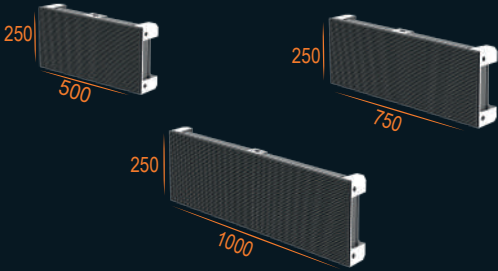
www.alfalite.com

MODULAR DESIGN

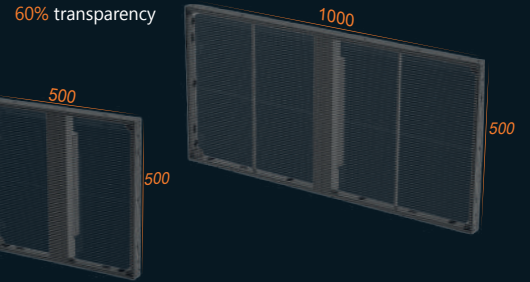
MODULARPIX® PRO



MODULARPIX® LITE



MODULAR® CRISTALPIX



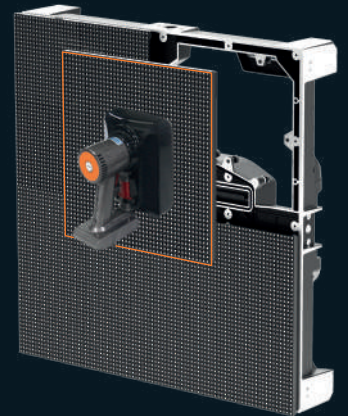
EASY AND FAST MAINTENANCE

- Front and rear maintenance
- No tools required
- Fast and accurate installation
- MOM: Module replacement with unified calibration

- QUICK AND ACCURATE
- EASY MAINTENANCE
- LIGHTWEIGHT

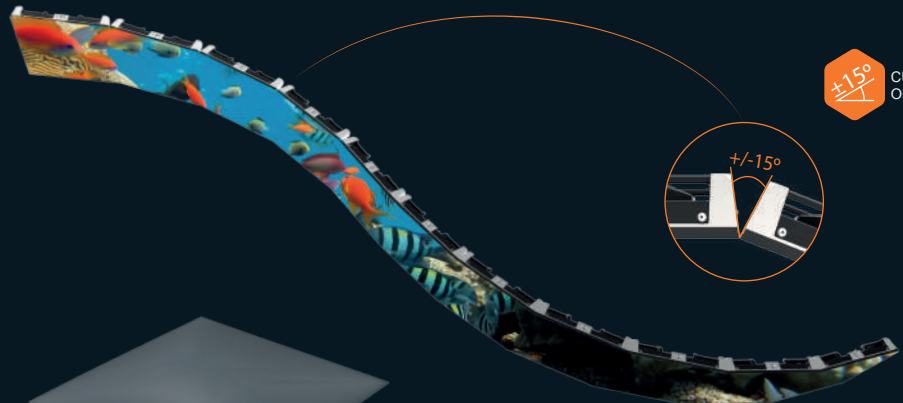


Chassis handles can be used as a ladder



MODULARPIX® PRO: VERSATILE DESIGN

- Aluminum or Magnesium led cabinets
- Concave/convex curve option $\pm 15^\circ$
- ORIM (Optical Resin Injection Module)



$\pm 15^\circ$ CURVE OPTION

PCB

- 4/6 Layers
- Gold surface treatment
- Technical RoHS marking, UL certification

ORIM®

- Easy to clean with enhanced protection against hits and humidity
- Highest protection against static electricity. ESD > 10KV
- < 0,02 mm pinpoint accuracy/space between modules
- Fire resistance parameters. UL94-0 compliant

SMART PANEL

- Preemptive and remote maintenance
 - Temperature and humidity
 - Data/video connectors
 - Sending and receiving card control
- Remote monitoring and control
 - External elements
 - Color and brightness parameters
 - Refresh rate (Hz)



EUROPEAN MANUFACTURER 4.0

- Mechanical and electronic industrial design
 - Design tools for CAD and 3D
 - AR simulation (Augmented reality)
- PCB manufacture. In-house SMD production lines
 - Traceability
 - Control system and automation
 - Measurements for BIG DATA
- LEAN Manufacturing methodology

Quality, Reliability, Durability HIGH RESIDUAL VALUE

SMART POWERBOX

- Powerbox Status display
 - Status Report database collection, Data/video
 - Main/Back-up signal state



No Fans-Noise Free
Wireless FA, HUB and modules
Heat dissipation by free convection

ALFALITEWOW
COLOR/BRIGHTNESS ALFALITE CUSTOMISED CALIBRATION



#openyoureyes
#wearealfalite



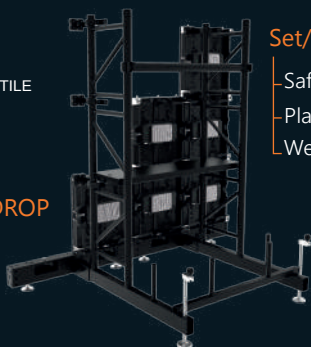
INSTALLATION ACCESSORIES

STACK SYSTEM



VERSATILE

DRAG and DROP installation

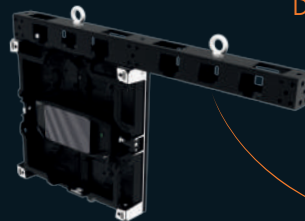


Set/floor customised stacking system

- Safety bars
- Platform option
- Weight supports

HANGING BAR

Designed for Modularpix®Series
Different measures



STRONG AND RESILIENT



FLOOR APPLICATIONS

Polycarbonate
Tempered Glass
Interactive and you can step on it



FLED FLOOR

CUSTOM INSTALLATION

Custom structure/metal framing
Stack system
Wall mount



CUTTING EDGE TECHNOLOGY, DESIGNED TO THRILL

PRODUCT SPECIFICATIONS

SERIE ALFALITE MODULARPIX®

MODEL	MODULARPIX PRO HB			MODULARPIX PRO					MODULARPIX LITE			MODULARPIX CRISTAL	
PIXEL PITCH (mm)	3.9	4.8	5.9	1.5	1.9	2.6	2.9	3.9	1.9	2.6	3.9 / HB	3.9 x 7.8	7.9 x 7.8
PANEL RESOLUTION (px)	128 x 128	104 x 104	84 x 84	320 x 320	256 x 256	192 x 192	168 x 168	128 x 128	512* x 128	384* x 96	256* x 64	256 x 64	126 x 64
MODULE RESOLUTION (pixel)	64 x 64	52 x 52	42 x 42	160 x 160	128 x 128	96 x 96	84 x 84	64 x 64	128 x 128	96 x 96	64 x 64	128 x 32	63 x 32
PANEL SIZE (mm)	500 x 500 / 500 x 250			500 x 500 / 500 x 250					500/750/1000* x 250			500/1000 x 500	1000 x 500
PIXEL CONFIGURATION	RGB 3 IN 1 SMD			RGB 3 IN 1 SMD					RGB 3 IN 1 SMD			RGB 3 IN 1 SMD	
MODULE SIZE (mm)	250 x 250			250 x 250					250 x 250			-	-
PANEL WEIGHT (kg) Aluminium/Magnesium	8.9/7.8			8.9/7.8					4.0/5.1/6.3			4.5/7.0	12
BRIGHTNESS (cd/m ²)	5.000			1.900		1.500			1.000	1.000	1.000 / 3000	4.000	3.500
REFRESH RATE (Hz)	3.840			7.680		4.440			3.840			1.920	1.920
IP PROTECTION (Frontal/Trasero)	IP54			IP22					IP40			IP20	IP30
AVERAGE POWER CONSPITION (W/panel)	45			35					30			125	125
LIFESPAM (horas)	100.000			100.000					100.000			100.000	100.000
CURVED VERSION (2,5° steps)	-15°/+15°			-15°/+15°					-			-	-

CERTIFICATIONS

* Technical specifications are flexible and can be modified in accordance with the project requirements.

** EMC and RoHS Certifications exceed the normal values.

*** The resolution for ModularPix Pro show 500 x 500 size. The resolution for ModularPix Lite show 1000 x 250 size.



P.I. Doña Paca. C/ Zalema, 2.
21720 Rociana del Condado
Huelva. SPAIN.

Website: www.alfalite.com
info@alfalite.com
Telf. 959 41 73 71



@Alfalite



Alfalite.led



alfalite.led



Alfalite